

**POR  
TO  
JÓIA**

INTERNATIONAL FAIR OF  
JEWELLERY, GOLDSMITHING  
AND WATCHMAKING

## PORTOJÓIA STANDS

### STAND Y



**Structure:** 2.5m high carpentry walls;

**Walls:** white colour;

**Floors:** beige carpet;

**Furniture:** 1 round table and 3 chairs;

**Lighting:** 2 projectors;

**Company Identification:** lettering (max: 30 characters).

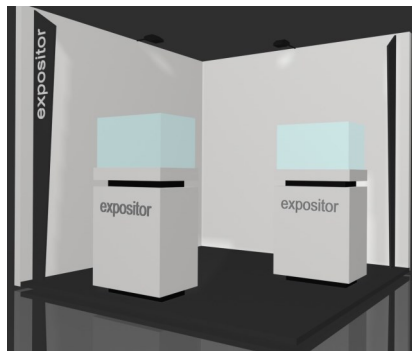
**9 sqm 635 €**

**18 sqm 1.175 €**

**27 sqm 1.750 €**

**36 sqm 2.130 €**

### STAND Y Plus



**Structure:** 2.5m high carpentry walls;

**Walls:** white colour;

**Floors:** beige carpet on platform;

**Furniture:** 1 round table, 3 chairs and 2 lighted showcases;

**Lighting:** 2 projectors;

**Company Identification:** lettering (max: 30 characters).

**9 sqm 1.170 €**

**18 sqm 1.870 €**

**27 sqm 2.500 €**

**36 sqm 2.995 €**

### STAND S



**Structure:** melamine sheets, silver-coloured aluminium profiles;

**Walls:** black or white;

**Floors:** beige carpet;

**Furniture:** 1 round table, 3 chairs and shop windows;

**Lighting:** lighting;

**Company Identification:** lettering (max: 30 characters).

**9 sqm 1.050 €**

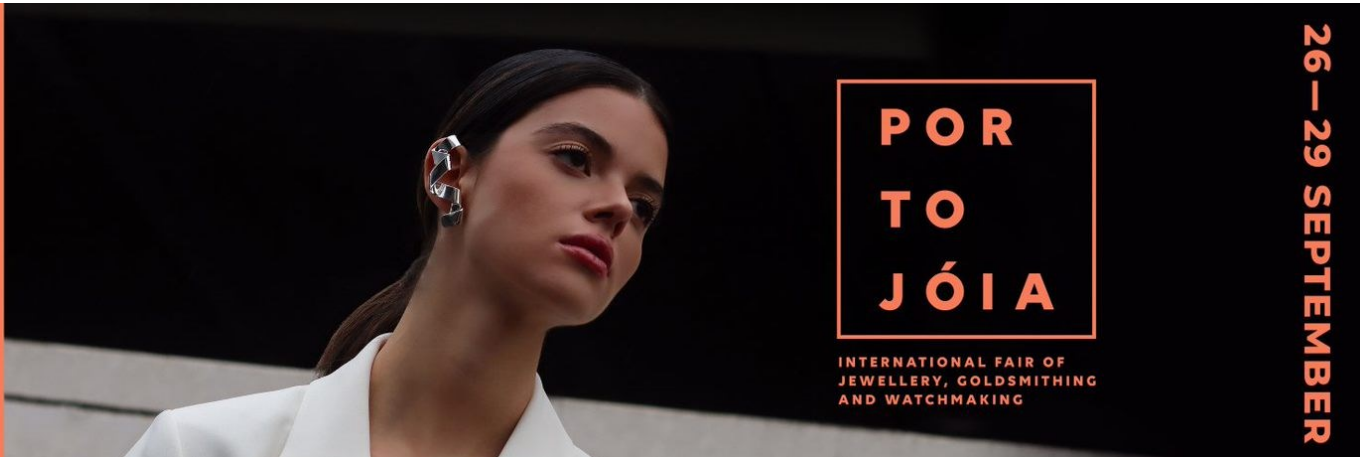
**18 sqm 1.920 €**

**27 sqm 2.535 €**

**36 sqm 2.930 €**

Clarify your doubts or make your reservation with **Madalena Rodrigues** through:

Phone: +351 961 332 490 | E-mail: [madalena.rodrigues@exponor.pt](mailto:madalena.rodrigues@exponor.pt)



## STAND Y AND Y PLUS EXTRAS

Paint colour change	17,50 €/sqm
Carpet colour change	4,40 €/sqm
Platform	19,50 /sqm
Reserved with 1x1 m door	175 €
Reservado com porta 1x2 m	230 €
Shelves 110x26 cm	25 €
<b>Graphic Arts</b>	<b>sqm</b>
Printing/placement of laminated self-adhesive vinyl	35 €
<b>Furniture</b>	<b>unit</b>
White Base Chair	13 €
Portojóia Display	195 €
White Round Table	30 €
MDF White Counter with Doors (1,0x1,0x0,50)	138 €
MDF White Counter with Shelf without Doors (1,0x1,0x0,50)	128 €

Clarify your doubts or make your reservation with **Madalena Rodrigues** through:

Phone: **+351 961 332 490** | E-mail: [madalena.rodrigues@exponor.pt](mailto:madalena.rodrigues@exponor.pt)

To the values presented, we must add the VAT rate in use.